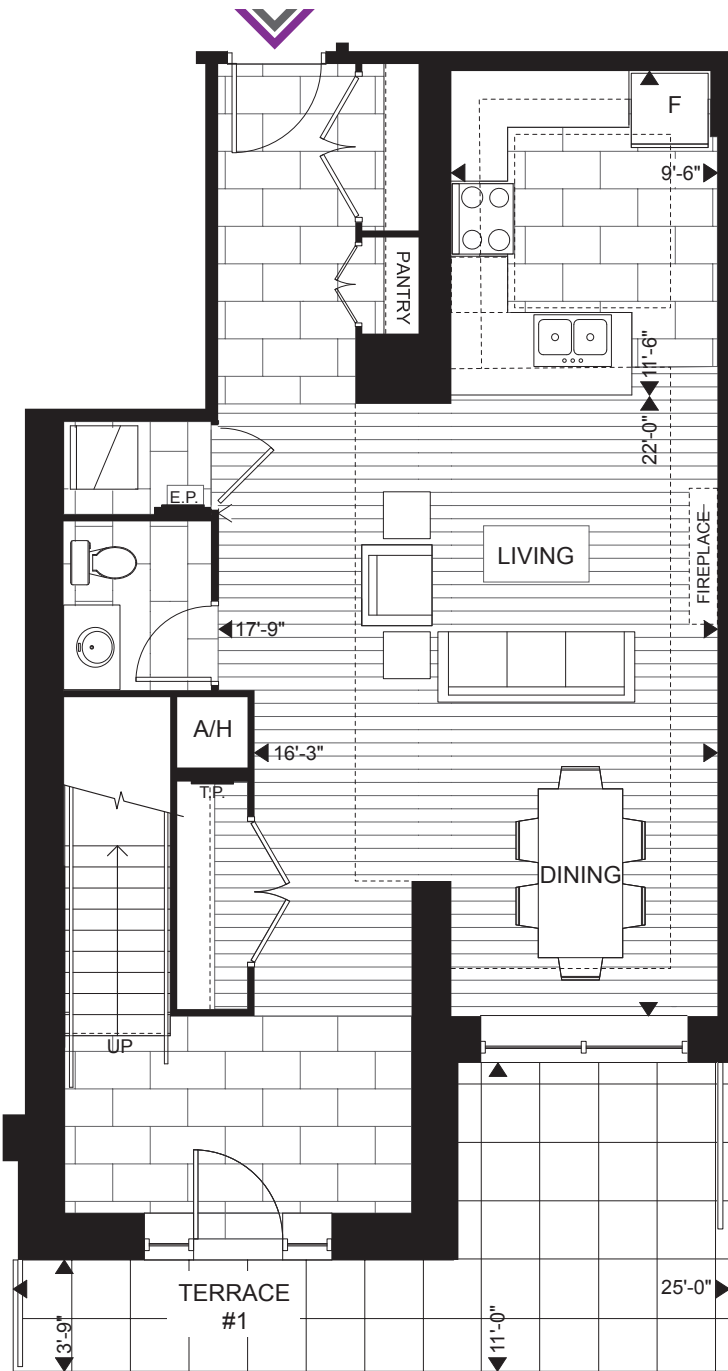


TOWN T2A 1667 SQ.FT. | 2 BED

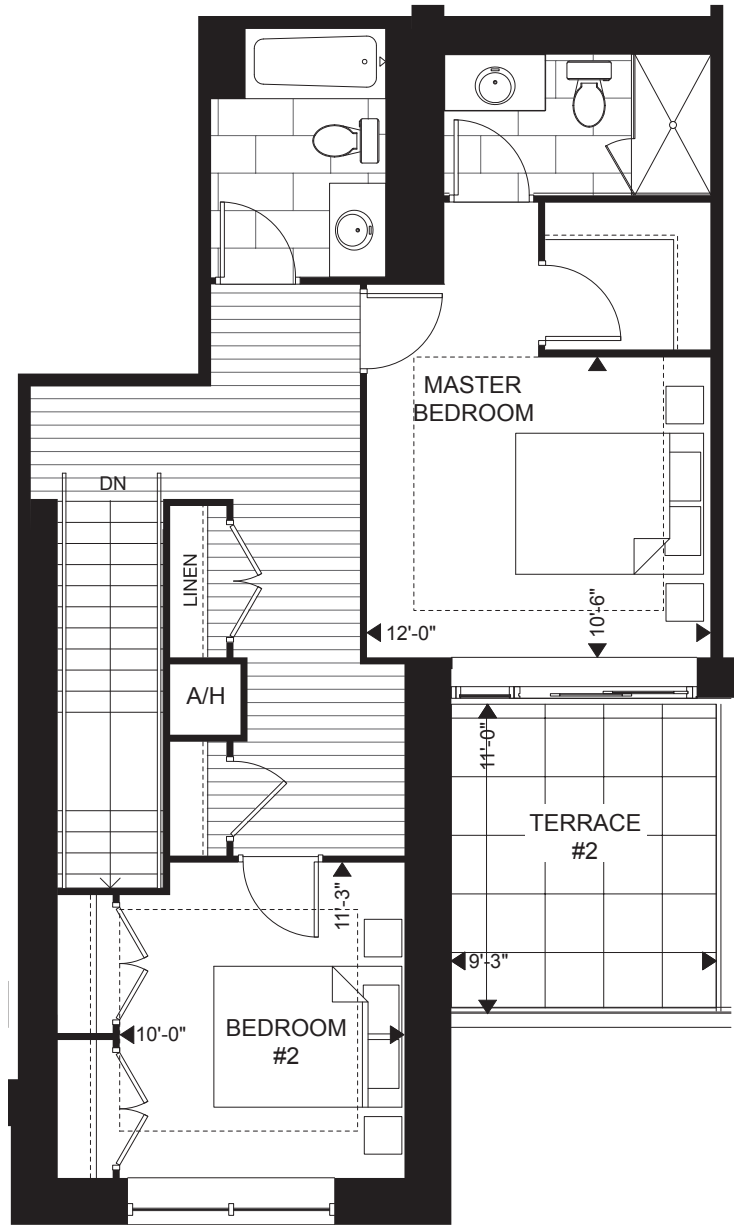
TERRACE 1: 166 SQ.FT. & TERRACE 2: 104 SQ.FT. | TOTAL: 1937 SQ.FT.



GORDON SQUARE
CONDOMINIUMS



1ST FLOOR



2ND FLOOR

SUITE AVAILABILITY



tricar.com/gordon

Plans are subject to change without notice. Actual floor space may vary from stated area. Plans may show optional features not included in base price. See sales staff for more details. E. & O. E.